

PCR Passenger Car Radial Tire LS288



LS288

Premium Touring All-Season Tires

series	Size	LI/SS	Approxed Rim	Tread depth		Overall Diameter		Section Width		Max. Load		Max. Pressure		Revs Per Mile	UTQG
				1/32"	mm	inch	mm	inch	mm	lbs	kg	psi	kpa		
50 series	195/50R 15	82V	5.5-6.0-7.0	10	7.8	22.7	577	7.8	198	1047	475	44	300	916	380 A A
55 series	195/55R 15	85V	5.5-6.0-7.0	10	7.8	23.3	592	8.0	203	1135	515	44	300	890	380 A A
	205/55R 16	91W	5.5-6.5-7.5	10	7.8	24.8	630	8.3	211	1356	615	44	300	838	380 A A
	215/55R 16	97W	6.0-7.0-7.5	10	7.8	25.2	604	8.8	224	1433	650	44	300	826	380 A A
60 series	185/60R 14	82H	5.0-5.5-6.5	10	7.8	22.8	579	7.4	188	1047	475	44	300	918	380 A A
	195/60R 14	86H	5.5-6.0-7.0	10	7.8	23.2	589	7.9	201	1168	530	44	300	890	380 A A
	185/60R 15XL	84H	5.5-6.0-6.5	10	7.8	23.7	602	7.3	185	1235	560	49	340	875	380 A A
	195/60R 15	88V	5.5-6.0-7.0	10	7.8	24.2	615	7.9	201	1235	560	44	300	862	380 A A
	215/60R 16	95H	6.0-6.5-7.5	10	7.8	26.1	663	8.7	221	1521	690	44	300	797	380 A A
	225/60R 16	98H	6.0-6.5-7.5	10	7.8	26.6	676	9.0	229	1653	750	44	300	784	380 A A
65 series	175/65R 14	82H	5.0-6.0	10	7.8	23.0	584	7.0	178	1047	475	44	300	900	380 A A
	185/65R 14	82H	5.0-5.5-6.5	10	7.8	23.5	597	7.4	188	1047	475	44	300	882	320 A A
	185/65R 15	88V	5.5-5.5-6.5	10	7.8	24.5	622	7.4	188	1235	560	44	300	855	320 A A
	195/65R 15	91H	5.0-6.0-7.0	10	7.8	25.0	635	7.9	201	1356	615	44	300	836	380 A A
	205/65R 15	94H	5.0-6.0-7.5	10	7.8	25.5	648	8.2	208	1477	670	44	300	822	380 A A
70 series	165/70R 13	79H	4.0-5.0-5.5	10	7.8	22.1	562	6.7	170	963	437	44	300	938	380 A A
	175/70R 13	82H	4.0-5.0-6.0	10	7.8	22.7	576	7.2	184	1047	457	44	300	916	380 A A
	165/70R 14	81H	4.0-5.0-5.5	10	7.8	23.2	589	6.6	168	1019	462	44	300	890	380 A A
	205/70R 14XL	98H	5.0-6.0-7.0	10	7.8	25.4	645	8.3	211	1653	750	49	340	816	380 A A
	215/70R 15	98H	5.5-6.5-7.0	10	7.8	26.9	683	8.7	221	1653	750	44	300	769	380 A A
75 series	215/75R 15	100H	5.5-6.0-7.0	10	7.8	27.7	704	8.5	216	1742	790	44	300	748	380 A A

Bold designates measuring rim width. These data can be changed by manufacturer without prior notice.

LS288



4-wide longitudinal grooves

Ensuring for high efficient water-evacuating, especially in wet conditions.



Lateral-directional groove connecting longitudinal grooves

Combined with longitudinal grooves, highly improved driving traction and wet grip.



Specially designed shoulder lateral-directional grooves

Gradually adjusted groove width ensures great performance.



◀ Silent lateral groove

Any tire section remains the same void of area, effectively decreased "pump" noise level.

▶ Solid continuous centering rib

Ensures straight-line driving stability. And small lateral grooves improve high-speed performance.



◀ Optimized pitch alignment

Optimized pitch alignment and offset between 2-side pitch lines avoid resonance and provide silent driving conditions.

▶ Heat-releasing design

Fashionable variable-pitch shoulder design effectively decrease resonance. Moreover, diamond shape and kerfing design forms an optimal heat-releasing feature.



◀ Straight-line driving stability

3 continuous circumferential ribs can provide excellent straight-line stability and resist irregular tread wear.

▶ Bars in shoulder area resisting irregular tread wear



★ special compound designed for decreasing fuel consumption. Approx. 15% less than counterparts.

This conclusion can vary while vehicle, size, air pressure, road conditions, load, drivers, and so on.

PCR Passenger Car Radial Tire LS688



LS688

Economic Passenger All-Season Tires

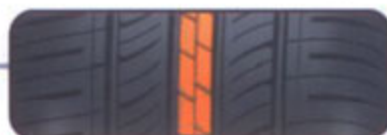
series	Size	LI/SS	Approxed Rim	Tread depth		Overall Diameter		Section Width		Max. Load		Max. Pressure		Revs Per Mile	UTQG
				1/32"	mm	inch	mm	inch	mm	lbs	kg	psi	kpa		
60 series	185/60R 14	82H	5.5-5.5-6.5	11	8.8	22.8	579	7.4	188	1047	475	44	300	918	420 A A
	195/60R 14	86H	5.5-6.0-7.0	11	8.8	23.2	589	7.9	201	1168	530	44	300	890	420 A A

Bold designates measuring rim width. These data can be changed by manufacturer without prior notice.

LS688



Designed for straight-line performance
Circumferential continuous blocks ensure, for straight-line performance.



Center solid rib
Center solid rib with small lateral grooves improves driving stability and acceleration performance.



Shoulder bars resisting irregular tread wear



← **High ratio of block/groove increase greatly tire durability**

Optimized sipe arrangement ➤

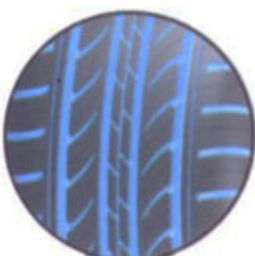
Sipe design in tread pattern, improve tire all season performance, especially in rainy road. Meanwhile, improve heat-evacuation of tread block.



← **4 wide longitudinal grooves**

Ensure for highly evacuating water from tire/road contact patch.

Crisp cornering shoulder design ➤



← **Logical combination of lateral & longitudinal grooves**

One hand, cutting water film in wet condition; on the other hand, provide excellent traction.

Optimized pitch alignment by simulation ➤

Avoid resonance to providing comfortable driving.



UHP Ultra High Performance Tire LS988



LS988

Ultra-High Performance Sport/Summer Tires

series	Size	LI/SS	Approxed Rim	Tread depth		Overall Diameter		Section Width		Max. Load		Max. Pressure		Revs Per Mile	UTQG
				1/32"	mm	inch	mm	inch	mm	lbs	kg	psi	kpa		
30 series	245/30ZR 20XL	90W	8.0-8.5-9.0	10	7.8	25.9	658	9.5	241	1323	600	49	340	801	320 A A
35 series	235/35ZR 19XL	91W	8.0-8.5-9.5	10	7.8	25.5	648	9.5	241	1356	615	49	340	814	320 A A
	225/35ZR 20XL	90W	7.5-8.0-9.0	10	7.8	26.4	671	9.0	229	1323	600	49	340	786	320 A A
40 series	205/40ZR 17XL	84W	7.0-7.5-8.0	10	7.8	23.5	597	8.6	218	1102	500	49	340	882	320 A A
	225/40ZR 18XL	92W	7.5-8.0-9.0	10	7.8	25.1	638	9.1	231	1389	630	49	340	827	320 A A
	235/40ZR 18XL	95W	8.0-8.5-9.5	10	7.8	25.4	645	9.6	244	1521	690	49	340	819	320 A A
45 series	225/45ZR 17XL	94W	7.0-7.5-8.5	10	7.8	25.1	638	8.9	226	1477	670	49	340	828	320 A A
	235/45ZR 17XL	97W	7.5-8.0-9.0	10	7.8	25.4	645	9.4	239	1609	730	49	340	819	320 A A
	245/45ZR 17	95W	7.5-8.0-9.0	10	7.8	25.7	653	9.8	249	1521	690	44	300	808	320 A A
	255/45ZR 18	100W	7.5-8.0-9.0	10	7.8	26.8	681	9.7	246	1764	800	44	300	776	320 A A
	245/45ZR 19	98Y	7.5-8.0-9.0	10	7.8	27.7	703	9.6	243	1653	750	44	300	747	320 A A
50 series	225/50ZR 17XL	98W	6.0-7.0-8.0	10	7.8	25.9	658	9.0	229	1653	750	49	340	802	320 A A
	225/50ZR 18	95W	6.0-7.0-8.0	10	7.8	26.9	683	9.0	229	1653	750	44	300	802	320 A A
	245/50ZR 18	100W	7.0-7.5-8.0	10	7.8	28.0	7.3	10.0	253	1764	800	44	300	744	320 A A
55 series	215/55ZR 17XL	98W	6.0-7.0-7.5	10	7.8	26.2	665	8.8	224	1653	750	49	340	793	320 A A

Bold designates measuring rim width. These data can be changed by manufacturer without prior notice.

LS988



4-wide longitudinal groove
Improve tire wet performance.



Silent groove sidewall design
Kerfing design in groove sidewall greatly decrease "ump" noise while tire rolling.



Optimized design of lateral & longitudinal grooves
Ensure for optimized wet grip and enough traction.



← Bars for straight-line driving
Continuous circumferential blocks ensure for straight-line stability at high speed.



← "v" shape tread pattern design
Provide excellent high-speed performance.



← Lateral grooves
Lateral grooves that forms "v" shape tread blocks improve wet grip capability, and ensure for confident braking performance.

"s" shape sipe design ▶

"s" shape sipe matches the tread pattern. More importantly, the sipes can improve the grip between tread blocks and road surface.



Crisp cornering shoulder design ▶

Ensure for controllability, and cornering safety, especially at high speed.



Bars in shoulder area resist irregular tread wear. ▶



SUV Sports Utility Vehicle Tire LS788



LS788

SUV Performance All Season Tires

series	Size	LI/SS	Approxed Rim	Tread depth		Overall Diameter		Section Width		Max. Load		Max. Pressure		Revs Per Mile	UTQG
				1/32"	mm	inch	mm	inch	mm	lbs	kg	psi	kpa		
30 series	295/30ZR26	107W XL	10.0-10.5-11.0	11	8.8	31.5	800	11.9	302	2149	975	49	340	659	320 A A
	305/30ZR26	109W XL	10.5-11.0-11.5	11	8.8	33.2	843	12.3	312	2271	1030	49	340	625	320 A A
35 series	315/35ZR20	110W XL	10.5-11.0-12.5	11	8.8	28.6	726	12.3	312	2337	1060	49	340	727	320 A A
	265/35ZR22	102W XL	9.0-9.5-10.5	10	8	29.3	744	10.4	264	1874	850	49	340	708	320 A A
	285/35ZR22	106W XL	9.5-10.0-11.0	10	8	29.8	757	11.3	287	2094	950	49	340	697	320 A A
40 series	305/35R24	112V XL	10.0-11.0-12.0	11	8.8	32.5	826	12.1	307	2469	1120	49	340	640	320 A A
	275/40ZR20	106W XL	9.0-9.5-11.0	11	8.8	28.7	729	9.9	251	2094	950	49	340	725	320 A A
	265/40R22	106V XL	9.0-9.5-10.5	11	8.8	30.4	772	10.7	272	2094	950	49	340	684	320 A A
45 series	305/40R22	114V XL	10.0-10.5-12.0	11	8.8	31.6	803	12.3	312	2601	1180	49	340	657	320 A A
	275/45R20	110V XL	8.5-9.0-10.5	11	8.8	29.8	757	10.6	269	2337	1060	49	340	698	320 A A
	275/45R22	112V XL	8.5-9.0-10.5	11	8.8	31.8	808	10.7	272	2469	1120	49	340	653	320 A A
50 series	305/45R22	118V XL	9.5-10.0-11.5	11	8.8	32.8	833	11.9	302	2910	1320	49	340	633	320 A A
50 series	285/50R20	116V XL	8.0-9.0-10.0	11	8.8	31.1	790	11.6	295	2756	1250	49	340	669	320 A A

Bold designates measuring rim width. These data can be changed by manufacturer without prior notice.

LS788



2-wide longitudinal groove

Twin longitudinal grooves with 3-D groove walls to resist hydroplaning in wet road and reduce noise level.



Design of sipe & assistant grooves

Alignment of sipes and sub-groove achieve for reducing the rigidity of tread blocks so as to improve wet performance and decrease noise level, while supporting the whole art design.



"v" shape lateral grooves

Stream-line lateral groove with a optimized level of slanting angle ensure wet performance and traction, while providing a quiet driving condition.



← application of leave shape

State of art tread pattern design provide optimal driving performance in dry or wet conditions.



← Longitudinal continuous central rib

Ensures high-speed stability.



← ptimized 5-variable-pitch alignment

Largely lowering noise level.

Strong shoulder area >

Provide enough camber stiffness, and secure crisp conering performance



Heat releasing design in harmony > with the whole design



Vibration-resisting circumferential > groove design

Improves comfortability of driving.

