

## UHP Ultra High Performance Tire THUNDER D7



### THUNDER D7

High Performance Sport/Summer Tires

series	Size	LI/SS	Approxed Rim	Tread depth		Overall Diameter		Section Width		Max. Load		Max. Pressure		Revs Per Mile	UTQG
				1/32"	mm	inch	mm	inch	mm	lbs	kg	psi	kpa		
30 series	245/30ZR20	97W XL	8.0-8.5-9.0	10	8.0	25.8	656	9.8	248	1609	730	49	340	804	320AA
	245/30ZR22	92W XL	8.0-8.5-9.0	10	8.0	27.8	706	9.8	249	1389	630	49	340	747	320AA
	255/30ZR22	95Y XL	8.5-9.0-9.5	10	8.0	28.1	713	10.2	260	1521	690	49	340	740	320AA
35 series	215/35ZR18	84W XL	7.0-7.5-8.5	10	8.0	23.9	607	8.6	218	1102	500	49	340	869	320AA
	235/35ZR19	91W XL	8.0-8.5-9.5	10	8.0	25.5	647	9.5	241	1356	615	49	340	815	320AA
	245/35ZR19	93W XL	8.0-8.5-9.5	10	8.0	25.8	655	9.8	248	1433	650	49	340	805	320AA
	225/35ZR20	90W XL	7.5-8.0-9.0	10	8.0	26.4	671	9.0	229	1323	600	49	340	787	320AA
	245/35ZR20	95W XL	8.0-8.5-9.5	10	8.0	26.8	681	9.6	244	1521	690	49	340	775	320AA
40 series	205/40ZR17	84W XL	7.0-7.5-8.0	10	8.0	23.5	597	8.6	218	1102	500	49	340	884	320AA
	225/40ZR18	92W XL	7.5-8.0-9.0	10	8.0	25.1	638	9.1	231	1389	630	49	340	828	320AA
	235/40ZR18	95W XL	8.0-8.5-9.5	10	8.0	25.4	645	9.5	241	1521	690	49	340	818	320AA
	245/40ZR18	97W XL	8.0-9.0-9.5	10	8.0	25.6	650	9.6	244	1609	730	49	340	812	320AA
45 series	215/45ZR17	91W XL	7.0-8.0	10	8.0	24.8	630	8.4	213	1356	615	49	340	837	320AA
	225/45ZR17	94W XL	7.0-7.5-8.5	10	8.0	25.0	634	8.9	225	1477	670	49	340	832	320AA
	235/45ZR17	97W XL	7.5-8.0-9.0	10	8.0	25.4	644	9.3	236	1609	730	49	340	819	320AA
	245/45ZR17	99W XL	7.5-8.0-9.0	10	8.0	25.7	652	9.6	243	1521	690	49	340	809	320AA
	255/45ZR18	103W XL	8.0-8.5-9.5	10	8.0	27.0	687	10.0	255	1929	875	49	340	768	320AA
	245/45ZR19	102W XL	7.5-8.0-9.0	10	8.0	27.7	703	9.6	243	1874	850	49	340	750	320AA
50 series	225/50ZR16	96W XL	6.0-7.0-8.0	10	8.0	24.9	632	9.2	233	1565	710	49	340	835	320AA
	205/50ZR17	93W XL	5.5-6.5-7.5	10	8.0	25.1	638	8.4	214	1433	650	49	340	827	320AA
	225/50ZR17	98W XL	6.0-7.0-8.0	10	8.0	25.9	658	9.2	233	1653	750	49	340	802	320AA
	245/50ZR18	104W XL	7.0-7.5-8.5	10	8.0	27.7	703	10.0	253	1984	900	49	340	750	320AA
55 series	205/55ZR16	94W XL	5.5-6.5-7.5	10	8.0	24.9	632	8.4	214	1356	615	49	340	835	320AA
	215/55ZR17	98W XL	6.0-7.0-7.5	10	8.0	26.3	668	8.9	226	1653	750	49	340	790	320AA
60 series	<b>225/60R16</b>	98H	6.0-6.5-8.0	10.5	8.3	26.6	676	9.0	228	1653	750	44	300	780	320AA
	215/60R16	99H XL	6.0-6.5-7.5	10.5	8.3	26.1	664	8.7	221	1709	775	49	340	794	320AA

Bold designates measuring rim width. These data can be changed by manufacturer without prior notice.

## THUNDER D7



New design and advanced technology provide new taste of high speed.

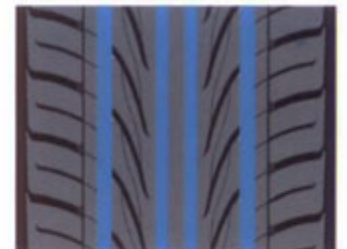
Series	30, 35, 40, 45, 55, 60
Rim Inches	16, 17, 18, 20, 22,
Speed Rate	W, Y, H
Typical Vehicle Matches	Acura Integra; Chevrolet Cavalier; Ford Focus; Dodge Neon; Honda Accord; Mazda Pratege; Mitsubishi Eclipse; Nissan Sentra; Audi A4; Volkswagen Golf; Passat; Toyota Corolla



### ◀ Originality

Both of the special main blaze shape pattern block and shoulder provide unparalleled operation property. Specialized compound, cooperated with siping designs, offers optimal balance for fuel economy, traction and ride comfort.

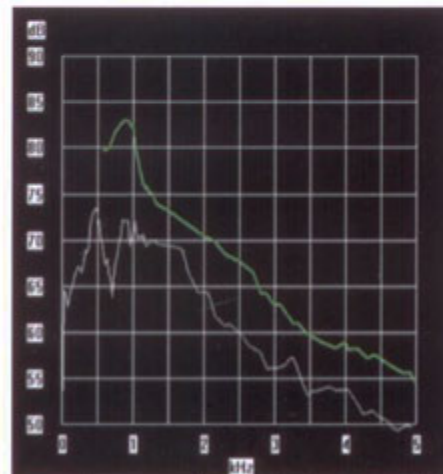
4-wide longitudinal grooves for highly hydroplaning resistance. ▶



Gradually changeable design of circumferentially center main grooves and the scores on side surface of grooves, on the one hand, can absorb the vibrational noise, on the other hand, it can steer air flow to reduce noise generated by collision.



Gradually changeable design of circumferentially center main grooves and the scores on side surface of grooves, on the one hand, can absorb the vibrational noise, on the other hand, it can steer air flow to reduce noise generated by collision.



■ Standard curves showing low noise level in North America.

○ Result of D7 Tire

## UHP Ultra High Performance Tire DL9100



### DL9100

#### High Performance All-Season

series	Size	LI/SS	Approxed Rim	Tread depth		Overall Diameter		Section Width		Max. Load		Max. Pressure		Revs Per Mile	UTQG
				1/32"	mm	inch	mm	inch	mm	lbs	kg	psi	kpa		
30 series	225/30ZR20	85W XL	8.0-8.5-9.0	10	8.0	27.8	706	9.8	249	1389	630	49	340	747	320AA
	275/30ZR20	97W XL	9.0-9.5-10.0	10	8.0	26.5	674	10.9	278	1609	730	49	340	783	320AA
	235/30ZR22	90W XL	8.5	10	8.0	27.6	701	9.5	242	1323	600	49	340	753	320AA
	245/30ZR22	92W XL	8.0-8.5-9.0	10	8.0	27.8	706	9.8	249	1389	630	49	340	747	320AA
	255/30ZR22	95Y XL	8.5-9.0-9.5	10	8.0	28.1	713	10.2	260	1521	690	49	340	740	320AA
35 series	215/35ZR18	84W XL	7.0-7.5-8.5	10	8.0	23.9	607	8.6	218	1102	500	49	340	869	320AA
	245/35ZR19	93W XL	8.0-8.5-9.5	10	8.0	25.8	655	9.8	248	1433	650	49	340	805	320AA
	225/35ZR20	90W XL	7.5-8.0-9.0	10	8.0	26.4	671	9.0	229	1323	600	49	340	787	320AA
	235/35ZR20	92W XL	8.0-8.5-9.5	10	8.0	26.5	672	9.5	241	1323	630	49	340	785	320AA
	245/35ZR20	95W XL	8.0-8.5-9.5	10	8.0	26.8	681	9.6	244	1521	690	49	340	775	320AA
	255/35ZR20	97W XL	8.5-9.0-10.0	10	8.0	27.0	686	10.2	260	1609	730	49	340	769	320AA
40 series	205/40ZR17	84W XL	7.0-7.5-8.0	10	8.0	23.5	597	8.6	218	1102	500	49	340	884	320AA
	225/40ZR18	92W XL	7.5-8.0-9.0	10	8.0	25.1	638	9.1	231	1389	630	49	340	828	320AA
	245/40ZR18	97W XL	8.0-9.0-9.5	10	8.0	25.6	650	9.6	244	1609	730	49	340	812	320AA
45 series	215/45ZR17	91W XL	7.0-8.0	10	8.0	24.8	630	8.4	213	1356	615	49	340	837	320AA
	225/45ZR17	94W XL	7.0-7.5-8.5	10	8.0	25.0	634	8.9	225	1477	670	49	340	832	320AA
	235/45ZR17	97W XL	7.5-8.0-9.0	10	8.0	25.4	644	9.3	236	1609	730	49	340	819	320AA
	245/45ZR17	99W XL	7.5-8.0-9.0	10	8.0	25.7	652	9.6	243	1521	690	49	340	809	320AA
	225/45ZR18	95W XL	7.0-7.5-8.5	10	8.0	25.9	659	8.9	225	1521	690	49	340	801	320AA
50 series	195/50R15	82V	5.5-6.0-7.0	10	8.0	22.7	577	7.9	201	1047	475	49	340	914	320AA
	205/50ZR17	93W XL	5.5-6.5-7.5	10	8.0	25.1	638	8.4	214	1433	650	49	340	827	320AA
	225/50ZR17	98W XL	6.0-7.0-8.0	10	8.0	25.9	658	9.2	233	1653	750	49	340	802	320AA
55 series	205/55ZR16	91W	5.5-6.5-7.5	10	8.0	24.9	632	8.4	214	1356	615	44	300	835	320AA
	215/55ZR16	97W XL	6.0-7.0-7.5	10	8.0	25.3	642	8.9	226	1609	730	49	340	822	320AA

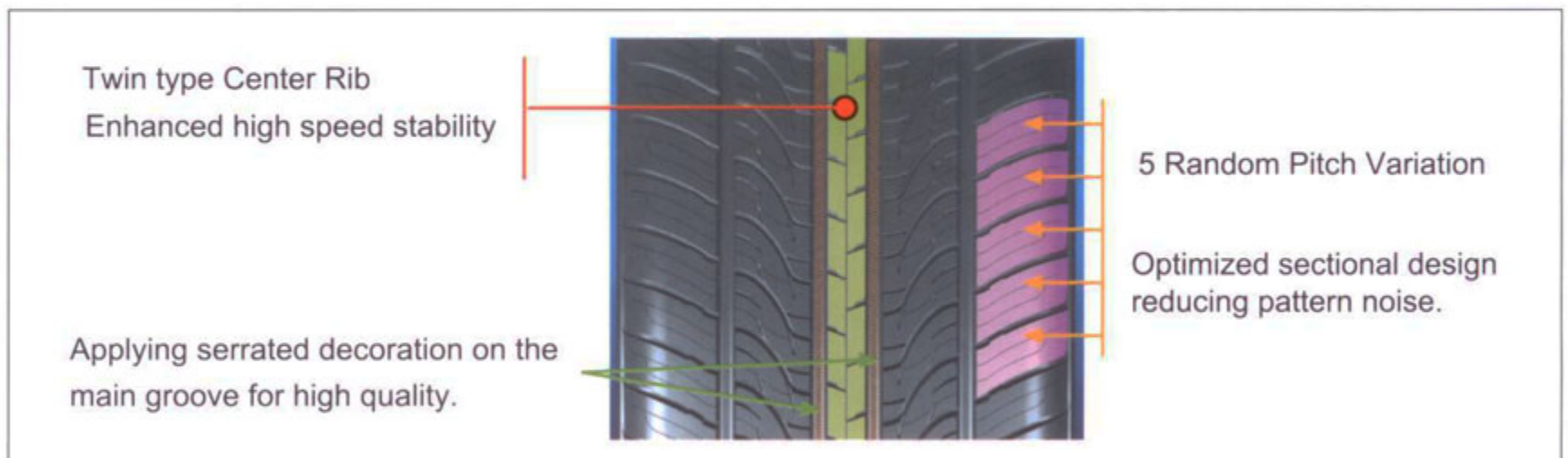
Bold designates measuring rim width. These data can be changed by manufacturer without prior notice.

## DL9100



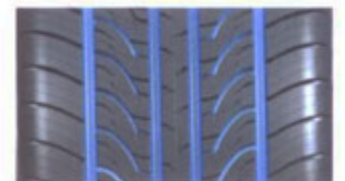
Ultra High Performance All Season tire providing excellent handling in all weather conditions. The stylish directional grooves enhance steering stability, rapid drainage, and reduced rolling resistance for sport car and sedan in wet and dry condition.

Series	30, 35, 40, 45, 50, 55
Rim Inches	15, 16, 17, 18, 19, 20, 22
Speed Rate	V, W
Typical Vehicle Matches	Acura 3.2 TL    Cadillac STS    Chrysler Sebring Honda Accord    Mazda 6            Camry Lexus ES, LS, SC, GS



Especially Kerf Design & Silica Compound  
Confident Wet & Snow Driving Performance on Any Road.

4 Wide Straight Grooves & V-directional Lateral Main Grooves  
Superior Driving Performance in Wet conditions.



Rigid Shoulder Block Design  
Enhanced cornering & handling stability.

## SUV Sports Utility Vehicle Tire DESERT STORM D8



### DESERT STORM D8

#### SUV Performance All Season Tires

series	Size	LI/SS	Approxed Rim	Tread depth		Overall Diameter		Section Width		Max. Load		Max. Pressure		Revs Per Mile	UTQG
				1/32"	mm	inch	mm	inch	mm	lbs	kg	psi	kpa		
<b>25 series</b>	<b>295/25ZR28</b>	<b>103W XL</b>	<b>10.0-10.5-11.0</b>	<b>11</b>	<b>8.8</b>	<b>27.8</b>	<b>860</b>	<b>9.8</b>	<b>301</b>	<b>1389</b>	<b>875</b>	<b>49</b>	<b>340</b>	<b>613</b>	<b>320AA</b>
<b>30 series</b>	<b>305/30ZR26</b>	<b>109W XL</b>	<b>10.5-11.0-11.5</b>	<b>11</b>	<b>8.7</b>	<b>33.2</b>	<b>843</b>	<b>12.3</b>	<b>312</b>	<b>2271</b>	<b>1030</b>	<b>49</b>	<b>340</b>	<b>626</b>	<b>320AA</b>
<b>35 series</b>	<b>265/35ZR22</b>	<b>102W XL</b>	<b>9.0-9.5-10.5</b>	<b>10</b>	<b>8.0</b>	<b>29.3</b>	<b>744</b>	<b>10.4</b>	<b>264</b>	<b>1874</b>	<b>850</b>	<b>49</b>	<b>340</b>	<b>709</b>	<b>320AA</b>
	285/35ZR22	106W XL	9.5-10.0-11.0	11	8.7	29.9	759	11.4	290	2094	950	49	340	695	320AA
	255/30ZR24	97W XL	8.5-9.0-9.5	10	8.0	30.1	764	10.2	260	1609	730	49	340	690	320AA
	305/35R24	112V XL	10.0-11.0-12.0	11	8.7	32.5	826	12.1	307	2469	1120	49	340	639	320AA
	255/30ZR26	99W XL	8.5-9.0-9.5	10	8.0	32.1	815	10.2	260	1929	875	49	340	647	320AA
	325/35R28	120V XL	11.0-11.5-13.0	11	8.7	37.0	939	13.0	331	3086	1400	49	340	562	320AA
<b>40 series</b>	<b>275/40ZR20</b>	<b>106W XL</b>	<b>9.0-9.5-11.0</b>	<b>11</b>	<b>8.7</b>	<b>28.7</b>	<b>728</b>	<b>10.9</b>	<b>278</b>	<b>2094</b>	<b>950</b>	<b>49</b>	<b>340</b>	<b>725</b>	<b>320AA</b>
	265/40R22	106V XL	9.0-9.5-10.5	11	8.7	30.4	771	10.7	271	2094	950	49	340	684	320AA
	305/40R22	114V XL	10.0-10.5-12.0	11	8.7	31.6	803	12.3	312	2601	1180	49	340	657	320AA
<b>45 series</b>	<b>275/45R20</b>	<b>110V XL</b>	<b>8.5-9.0-10.5</b>	<b>11</b>	<b>8.7</b>	<b>29.8</b>	<b>757</b>	<b>10.6</b>	<b>269</b>	<b>2337</b>	<b>1060</b>	<b>49</b>	<b>340</b>	<b>697</b>	<b>320AA</b>
	275/45R22	112V XL	8.5-9.0-10.5	11	8.7	31.8	807	10.7	273	2469	1120	49	340	654	320AA
	305/45R22	118V XL	9.5-10.0-11.5	11	8.7	32.8	833	11.9	303	2910	1320	49	340	633	320AA
<b>50 series</b>	<b>285/50R20</b>	<b>116V XL</b>	<b>8.0-9.0-10.0</b>	<b>11</b>	<b>8.7</b>	<b>31.1</b>	<b>790</b>	<b>11.6</b>	<b>295</b>	<b>2756</b>	<b>1250</b>	<b>49</b>	<b>340</b>	<b>668</b>	<b>320AA</b>
<b>55 series</b>	<b>275/55R20</b>	<b>117V XL</b>	<b>7.5-8.5-9.5</b>	<b>11</b>	<b>8.7</b>	<b>31.9</b>	<b>810</b>	<b>11.2</b>	<b>284</b>	<b>2833</b>	<b>1285</b>	<b>49</b>	<b>340</b>	<b>651</b>	<b>320AA</b>

Bold designates measuring rim width. These data can be changed by manufacturer without prior notice.

## DESERT STORM D8

### SUV UHP ALL SEASON



With state-of-the-art and aggressive appearance, Desert Storm D8 offers civilized highway performance as it delivers the sports-car like handling that unleashes the potential of sport trucks in wet and dry conditions.

Series	25 30 35 40 45	
Rim Inches	20 22 24 26 28 30	
Speed Rate	W, Y	
Typical Vehicle Matches	Dodge Durango, Ram Lexus LX470 Land Rover Nissan Pathfinder Hummer, H2, H3	Ford Expedition, F-150 pickups Mercedes-Benz, ML320, ML430 BMW X5 Jeep Grand Cherokee

WIDE ROLLING TREAD WIDTH OPTIMIZED BY COMPUTER SIMULIZATION



- + ultra-stiff bead filler
- + solid center rib

Large contact between tire/road

- \*Optimal high-speed stability
- \*Confident Cornering
- \*Superior traction

Central longitudinal continuous trunk-like rib  
— for straight line stability and high-speed controllability.



\*Innovative 3-D groove profile combined with a downstream line design enhances water evacuation and rubber-to-road contact.

\*Unique 2-in-1 pitch alignment reduces noise levels at high speeds.

Twin longitudinal grooves with 3-D groove walls to resist hydroplaning in wet road and reduce noise level.



- \* Variable pitch pattern and optimized sipe distribution, with 2-in-1 pitch alignment, minimize noise generation, contributing to quiet and comfortable ride.
- \* Convex & concave shoulder grooves provide stability while cornering in any direction, lowering noise level.
- \* Silicon compound, with sipe distribution, promotes grip in braking and handling especially in wet conditions.

## SUV Sports Utility Vehicle Tire DL4000



A Street/Sport Truck tire that offers civilized highway performance as it delivers the sports-car like handling that unleashes the potential of sport trucks. The tire offers exceptional handling in wet and dry conditions through a directional tread design developed specifically for light trucks.

### DL4000

#### Sport Performance All-Season Tires

series	Size	LI/SS	Approxed Rim	Tread depth		Overall Diameter		Section Width		Max. Load		Max. Pressure		Revs Per Mile	UTQG
				1/32"	mm	inch	mm	inch	mm	lbs	kg	psi	kpa		
30 series	295/30ZR26	107W XL	10.0-10.5-11.0	11	8.8	31.5	800	11.9	302	2149	975	49	340	659	320 A A
	305/30ZR26	109W XL	10.5-11.0-11.5	11	8.8	33.2	843	12.3	312	2271	1030	49	340	625	320 A A
35 series	315/35ZR20	110W XL	10.5-11.0-12.5	11	8.8	28.6	726	12.3	312	2337	1060	49	340	727	320 A A
	265/35ZR22	102W XL	9.0-9.5-10.5	10	8	29.3	744	10.4	264	1874	850	49	340	708	320 A A
	285/35ZR22	106W XL	9.5-10.0-11.0	10	8	29.8	757	11.3	287	2094	950	49	340	697	320 A A
	305/35R24	112V XL	10.0-11.0-12.0	11	8.8	32.5	826	12.1	307	2469	1120	49	340	640	320 A A
40 series	275/40ZR20	106W XL	9.0-9.5-11.0	11	8.8	28.7	729	9.9	251	2094	950	49	340	725	320 A A
	265/40R22	106V XL	9.0-9.5-10.5	11	8.8	30.4	772	10.7	272	2094	950	49	340	684	320 A A
	305/40R22	114V XL	10.0-10.5-12.0	11	8.8	31.6	803	12.3	312	2601	1180	49	340	657	320 A A
45 series	275/45R20	110V XL	8.5-9.0-10.5	11	8.8	29.8	757	10.6	269	2337	1060	49	340	698	320 A A
	275/45R22	112V XL	8.5-9.0-10.5	11	8.8	31.8	808	10.7	272	2469	1120	49	340	653	320 A A
	305/45R22	118V XL	9.5-10.0-11.5	11	8.8	32.8	833	11.9	302	2910	1320	49	340	633	320 A A
50 series	285/50R20	116V XL	8.0-9.0-10.0	11	8.8	31.1	790	11.6	295	2756	1250	49	340	669	320 A A

Bold designates measuring rim width. These data can be changed by manufacturer without prior notice.

## MT Mud Terrain LTR Tire MUD CHALLENGER D9



- ★ Special compound, designed for resisting cutting and tearing, greatly improve tire's durability.
- ★ Self-cleaning tread pattern design ensures tire's enough traction in mud, grit and other kind of soft road surface.
- ★ Tread grooves with extra depth increase tire traction in off-road condition.
- ★ Reinforcing bars in shoulder area, enhance tire durability.
- ★ Rugged tire shoulder design more heighten tire's off-road traction
- ★ Optimized tire structure, with 2 body plies, 2 jointless nylon capplies & 2 belts utilizing specially reinforced material from suppliers, provide excellent tire durability, driving controllability, and puncture-resisting performance.

## MT Mud Terrain LTR Tire MUD CHALLENGER D9



### MUD CHALLENGER D9

Size	LI/SS	Approxed Rim	Tread depth		Overall Diameter		Section Width		Max. Load		Max. Pressure		Revs Per Mile
			1/32"	mm	inch	mm	inch	mm	lbs	kg	psi	kpa	
<b>LT265/75R16 D/8</b>	<b>119Q</b>	<b>7.0-7.5-8.0</b>	<b>15.6</b>	<b>12.4</b>	<b>31.5</b>	<b>801</b>	<b>10.7</b>	<b>273</b>	<b>3000</b>	<b>1361</b>	<b>65</b>	<b>450</b>	<b>659</b>
LT285/75R16 D/8	122Q	7.0-8.0-9.0	16.5	13.1	32.7	830	11.3	288	3305	1499	65	450	636
LT285/75R16 E/10	126Q	7.0-8.0-9.0	16.5	13.1	32.8	832	11.4	290	3750	1701	80	550	634
LT315/75R16 D/8	121Q	8.0-8.5-10.0	16.5	13.1	34.5	876	12.3	313	3195	1449	65	450	602
LT285/70R17 E/10	126R	7.0-8.5-9.0	16.5	13.1	32.8	832	11.5	292	3750	1701	80	550	634
LT295/70R17 D/8	123R	8.0-8.5-9.5	16.5	13.1	33.2	843	12.1	308	3195	1449	65	450	626
LT285/65R18 E/10	125R	8.0-8.5-10.0	15.6	12.4	31.7	807	11.7	297	3640	1651	80	550	1775
LT325/60R18 D/8	119S	9.0-9.5-12.0	15.6	12.4	33.0	838	12.8	326	3000	1361	65	450	630
LT305/55R20 E/10	121S	9.0-9.5-10.0	15.6	12.4	33.1	840	12.6	320	3195	1449	80	550	628
LT325/60R20 D/8	121R	9.0-9.5-12.0	15.6	12.4	35.1	892	12.9	328	3195	1449	65	450	591
<b>33X12.50R18LT E/10</b>	<b>118Q</b>	<b>8.5-10.0-11.0</b>	<b>21.0</b>	<b>16.7</b>	<b>33.0</b>	<b>837</b>	<b>12.7</b>	<b>322</b>	<b>2910</b>	<b>1320</b>	<b>80</b>	<b>550</b>	<b>630</b>
35X12.50R18LT E/10	123Q	8.5-10.0-11.0	21.0	16.7	35.0	890	13.4	340	3420	1551	80	550	593
33X12.50R20LT E/10	114R	8.5-10.0-11.0	21.0	16.7	33.0	837	12.8	325	2600	1179	80	550	630
35X12.50R20LT E/10	121Q	8.5-10.0-11.0	21.0	16.7	35.0	890	12.2	310	3195	1449	80	550	593
37X13.50R20LT E/10	127Q	8.5-11.0	21.0	16.7	37.0	941	14.1	359	3860	1751	80	550	561
38X15.50R20LT D/8	125Q	11.0-12.0-13.0	21.0	16.7	37.7	958	14.6	372	3640	1651	65	450	551
37X13.50R22LT E/10	123R	8.5-11.0	21.0	16.7	37.0	941	14.1	359	3420	1551	80	550	561

Bold designates measuring rim width. These data can be changed by manufacturer without prior notice.